



UL certification only for PG 21



- Mini polyglas enclosure with hidden external hinge for MCR technology
- Standard version or with window

## Technical data

**Material:**

glass fibre reinforced duroplastic polyester

**Colour:**

RAL 7038, agate grey  
special colour on request

**Ingress protection:**

IP 66 to EN 60529

**Impact resistance:**

7 Joule to EN 60079-0

**Flammability:**

V0 / self-extinguishing, UL 94

**Insulation:**

fully insulated to VDE 0100

**Disruptive strength:**

18 KV/mm, IEC 60243-1

**Toxicity:**

halogen-free

**Surface resistance:**

$>10^{12}$  Ohm, IEC 60093

**Door opening angle:**

120°

**Temperature range:**

-40°C to +100°C

window version: -40°C to +80°C

### Included in delivery

Enclosure consisting of base and door;  
please order door lock separately, press-in  
inserts in base for internal mounting

# Mini-Polyglas

## Product range

Mini-Polyglas	Dimensions (mm) W x L x H	Weight (g)	Mini-Polyglas	Mini-Polyglas with window	Mounting plate (sheet steel, loose)
Size 1	120 x 200 x 100	1240	<b>21.12 20 00</b>	<b>22.12 20 00</b>	<b>10.01 12 07</b>
Size 2	160 x 260 x 100	1900	<b>21.16 26 00</b>	<b>22.16 26 00</b>	<b>10.01 12 08</b>
Size 3	160 x 340 x 100	2000	<b>21.16 34 00</b>	<b>22.16 34 00</b>	<b>10.01 12 09</b>
Size 4	200 x 150 x 100	1380	<b>21.20 15 00</b>	<b>22.20 15 00</b>	<b>10.01 12 10</b>
Size 5	200 x 200 x 170	2068	<b>21.20 20 00</b>	<b>22.20 20 00</b>	<b>10.01 12 01</b>
Size 6	200 x 300 x 170	2990	<b>21.20 30 00</b>	<b>22.20 30 00</b>	<b>10.01 12 02</b>

Note: Standard delivery enclosure without locking screws, please order separately

## Verschlusschrauben wahlweise (lose)

Triangular screw 8 mm (2 pcs.)	<b>21.63 00 03</b>
Square screw 8 mm (2 pcs.)	<b>21.63 00 04</b>
Square screw 6 mm (2 pcs.)	<b>21.63 00 24</b>
Philip screw (2 pcs.)	<b>21.63 00 05</b>

## Accessories (lose)

External mounting brackets (4 pcs.)	<b>10.03 10 08</b>
Socket spanner, triangular 8 mm	<b>10.04 70 03</b>
Socket spanner, square 8 mm	<b>10.04 70 04</b>
Philips socket spanner	<b>10.04 70 05</b>

## Accessories



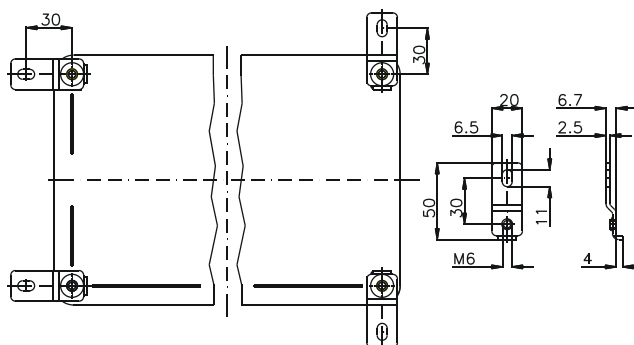
### Mounting plates

Order No.	for type
<b>10.01 12 07</b>	21.12 20
<b>10.01 12 08</b>	21.16 26
<b>10.01 12 09</b>	21.16 34
<b>10.01 12 10</b>	21.20 15
<b>10.01 12 01</b>	21.20 20
<b>10.01 12 02</b>	21.20 30



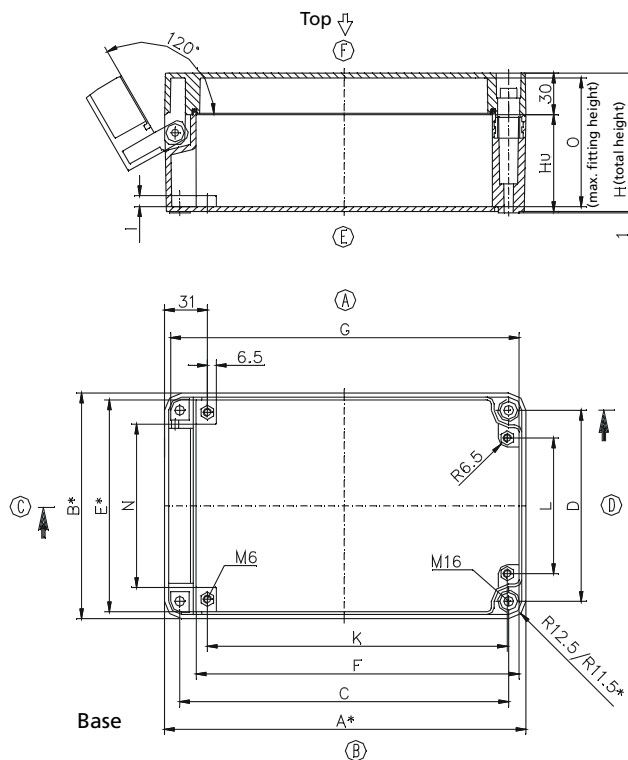
### External mounting brackets set = 4 pcs.

Order No. **10.03 10 08**



## Dimensions

Type	A	B	C	D	E	F	G	I	K	L	M	N	H <sub>U</sub>	H <sub>ges</sub>
<b>21.12 20</b>	201,5/155*	123/120,5*	178	98	113/111*	173,5	190	7	157	58	95	78	70	100
<b>21.16 26</b>	261,5/259*	163/160,5*	238	138	153/151*	233,5	250	8	217	98	118	118	70	100
<b>21.16 34</b>	341,5/339*	163/160,5*	318	138	153/151*	313,5	330	7,5	297	98	118	118	70	100
<b>21.20 15</b>	151,5/149*	203/200,5*	128	178	193/191*	123,5	140	8,5	88	175	158	158	70	100
<b>21.20 20</b>	200/197*	200/197*	175	175	190/187*	173	188	8,5	135	170	149	149	138	168
<b>21.20 30</b>	300/297*	200/197*	275	175	190/187*	273	288	8,5	235	170	149	149	138	168



\* = Conical form tapering downwards  
Free dimensions-tolerance to DIN 16901 - 130

## Windows

Type	A	B	C
<b>22.12 20 00</b>	116	66	45
<b>22.16 26 00</b>	176	108	45
<b>22.16 34 00</b>	256	108	45
<b>22.20 15 00</b>	66	147	45
<b>22.20 20 00</b>	120	120	45
<b>22.20 30 00</b>	210	120	45

